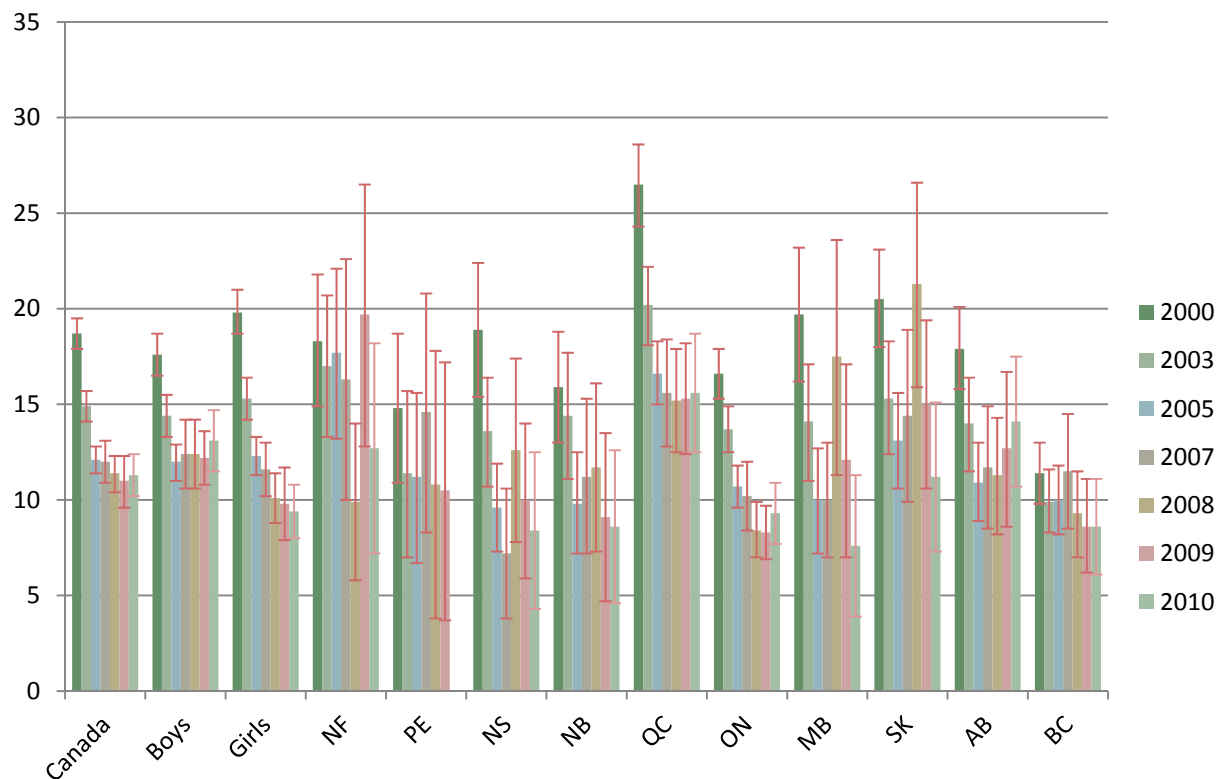


Smoking among young Canadians by province, 2000-2010

Key findings

- The number and percentage of young Canadians (aged 12 to 19) who smoked fell by about 40% in less than a decade.
- The differences between smoking rates in Canadian provinces have narrowed: where British Columbia has significantly lower youth smoking rates in 2000, other provinces are now reporting rates as low as those in B.C.

CURRENT SMOKING, DAILY AND OCCASIONAL, CANADIANS AGED 12 – 19 YEARS OF AGE 2000-2009



NUMBER OF SMOKERS, AGED 12 TO 19 YEARS OF AGE WHO SMOKE ON A DAILY OR OCCASIONAL BASIS

	2000	2003	2005	2007	2008	2009	2010
Canada	605,558	490,296	405,109	403,212	382,961	371,279	375,512
• Boys	292,307	244,103	204,113	213,296	216,498	210,318	222,712
• Girls	313,250	246,193	200,996	189,916	166,463	160,961	152,800
Newfoundland and Labrador	11,311	9,855	9,415	E8,098	E4,842	E9,489	E6,012
Prince Edward Island	E2,420	E1,883	E1,812	E2,257	E1,700	E1,640	F
Nova Scotia	18,938	13,648	9,325	E6,745	E11,691	E9,079	E7,455
New Brunswick	12,596	11,223	7,427	E8,252	E8,569	E6,567	E6,033
Quebec	191,957	146,822	124,459	117,844	114,481	114,475	116,771
Ontario	205,459	176,428	141,503	137,328	114,055	112,568	124,060
Manitoba	23,945	17,275	12,343	12,311	E21,743	E15,071	E9,515
Saskatchewan	24,046	17,381	14,122	15,138	22,392	15,698	E11,566
Alberta	62,485	49,538	39,200	42,649	40,940	46,171	51,214
British Columbia	47,706	42,192	42,481	48,738	39,452	37,166	36,492

Statistics Canada: Canadian Community Health Survey, 2009; E=Interpret with caution; F=failed

PERCENTAGE OF POPULATION AGED 12 TO 19 YEARS OF AGE WHO SMOKE ON A DAILY OR OCCASIONAL BASIS

	2000	2003	2005	2007	2008	2009	2010
Canada	18.7	14.9	12.1	12	11.4	11	11.3
	17.9-19.5	14.1-15.7	11.4-12.8	10.9-13.1	10.4-12.3	10-12.1	10.2-12.4
• Boys	17.6	14.4	12	12.4	12.6	12.2	13.1
	16.5-18.7	13.3-15.5	11-12.9	10.6-14.2	11.1-14	10.8-13.7	11.5-14.7
• Girls	19.8	15.3	12.3	11.6	10.1	9.8	9.4
	18.7-21	14.2-16.4	11.3-13.3	10.2-13	8.8-11.4	8.4-11.2	8.0-10.8
Newfoundland and Labrador	18.3	17	17.7	E16.3	E9.9	E19.7	E12.7
	14.9-21.8	13.3-20.7	13.2-22.1	10-22.6	5.8-14	12.8-26.5	7.3-18.2
Prince Edward Island	E14.8	E11.4	E11.2	E14.6	E10.8	E10.5	F
	10.9-18.7	7-15.7	6.7-15.6	8.3-20.8	3.8-17.8	3.7-17.2	
Nova Scotia	18.9	13.6	9.6	E7.2	E12.6	E10	E8.4
	15.4-22.4	10.7-16.4	7.3-11.9	3.8-10.6	7.8-17.4	5.9-14	4.2-12.5
New Brunswick	15.9	14.4	9.8	E11.2	E11.7	E9.1	E8.6
	13-18.8	11.1-17.7	7.2-12.5	7.2-15.3	7.3-16.1	4.7-13.5	4.5-12.6
Quebec	26.5	20.2	16.6	15.6	15.2	15.3	15.6
	24.3-28.6	18.1-22.2	15-18.3	12.8-18.4	12.5-17.9	12.4-18.2	12.5-18.7
Ontario	16.6	13.7	10.7	10.2	8.4	8.3	9.3
	15.3-17.9	12.5-14.9	9.6-11.8	8.4-12	7-9.9	6.9-9.7	7.8-10.9
Manitoba	19.7	14.1	10	10	E17.5	E12.1	E7.6
	16.2-23.2	11-17.1	7.2-12.7	7-13	11.3-23.6	7-17.1	3.8-11.3
Saskatchewan	20.5	15.3	13.1	14.4	21.3	15	E11.2
	18-23.1	12.4-18.3	10.6-15.6	9.9-18.9	15.9-26.6	10.6-19.4	7.4-15.1
Alberta	17.9	14	10.9	11.7	11.3	12.7	14.1
	15.8-20.1	11.5-16.4	8.9-13	8.5-14.9	8.2-14.3	8.6-16.7	10.7-17.5
British Columbia	11.4	9.9	10	11.5	9.3	8.6	8.6
	9.8-13	8.3-11.6	8.2-11.8	8.5-14.5	7-11.5	6.2-11.1	6.1-11.1

Statistics Canada: Canadian Community Health Survey, 2009; E=Interpret with caution; F=failed

Sources:

Canadian Community Health Survey, Statistics Canada. Cycle 1.1, 2.1, 3.1 2007, 2008, 2009 and 2010