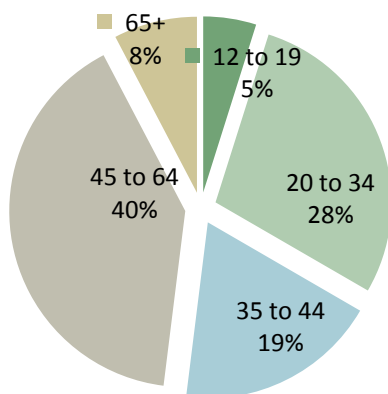
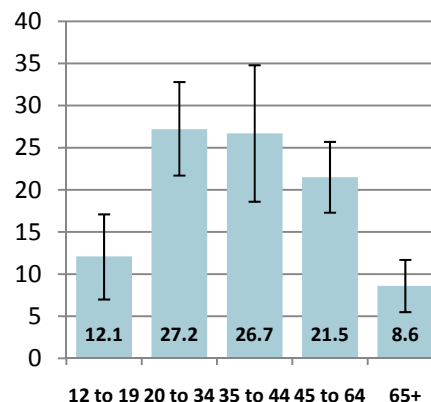


# Smoking in Manitoba 2009

Distribution of smokers by age, Manitoba, 2009



Prevalence of smoking by age, Manitoba, 2009



## CURRENT SMOKING (DAILY AND OCCASIONAL) IN MANITOBA, 2009

	Percentage of population			Number of People
	Prevalence	95% confidence interval		
		Low	high	
<b>Canada</b>	<b>20.1</b>	<b>19.6</b>	<b>20.7</b>	<b>5,730,321</b>
<b>Manitoba</b>	<b>20.5</b>	<b>18.2</b>	<b>22.7</b>	<b>197,714</b>
<b>By Health Unit</b>				
• Assiniboine	17.8	12.6	23	9,354
• Brandon	20.2	12.6	27.7	8,469
• Burntwood/Churchill	36.5	22.2	50.8	5,533
• Central	24.9	17.5	32.2	19,902
• Interlake	22.6	12	33.2	13,896
• Nor man	32.1	21.4	42.8	4,204
• North Eastman	19.3	12.7	25.9	6,144
• Parkland	27.5	16.8	38.2	8,457
• South Eastman	21.6	14	29.2	11,927
• Winnipeg	18.8	15.6	22	109,829
Men	22.4	19.1	25.8	106,909
Women	18.5	15.3	21.8	90,805
12 to 19 years of age (both sexes)	12.1	7	17.1	15,071
20-34 years of age (both sexes)	27.2	21.7	32.8	59,967
35-44 years of age (both sexes)	26.7	18.6	34.8	43,438
45-64 years of age (both sexes)	21.5	17.3	25.7	66,234
65 years and over (both sexes)	8.6	5.5	11.7	13,004

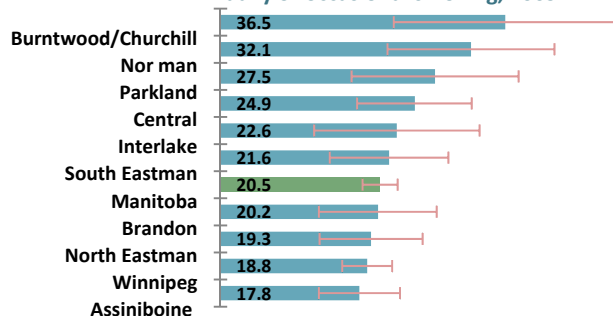
Statistics Canada: Canadian Community Health Survey, 2009. E=Interpret with caution

### NUMBER OF SMOKERS (DAILY AND OCCASIONAL) IN MANITOBA: TRENDS 2000-2009

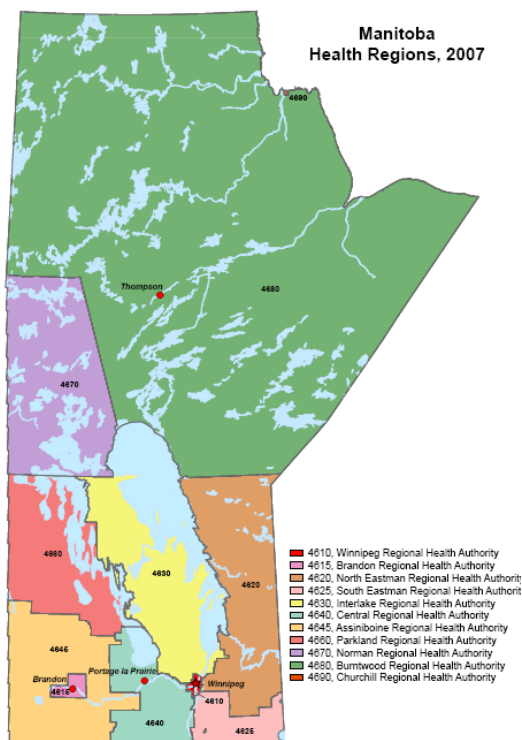
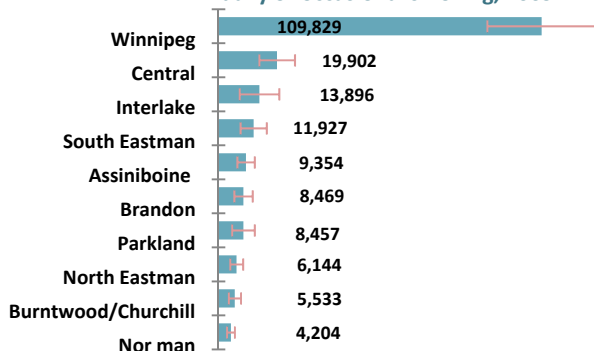
	2000	2003	2005	2007	2008	2009	% Change
<b>Number of Smokers</b>							<b>2000-2009</b>
Canada	6,677,856	6,080,504	5,874,689	6,112,442	6,009,311	5,730,321	-14%
Manitoba	226,687	207,180	190,762	211,692	230,436	197,714	-13%
<b>By Health Unit</b>							
Assiniboine (Marq/S.Westman)	11,521	11,185	8,718	14,124	11,485	9,354	-19%
Brandon	10,211	8,936	9,816	8,758	10,308	8,469	-17%
Burntwood/Churchill	7,035	6,191	5,188	5,448	6,165	5,533	-21%
Central	17,381	17,246	15,720	16,286	19,927	19,902	15%
Interlake	17,362	13,737	11,670	10,973	15,849	13,896	-20%
Nor man	3,864	4,159	4,052	4,109	4,182	4,204	9%
North Eastman	7,132	5,930	6,056	7,754	8,871	6,144	-14%
Parkland	8,328	7,109	7,555	4,829	8,332	8,457	2%
South Eastman	9,458	10,494	9,344	11,898	11,952	11,927	26%
Winnipeg	134,394	122,195	112,642	127,514	133,366	109,829	-18%
<b>By Sex and Age Group</b>							
Men	123,966	103,973	100,018	116,116	128,043	106,909	-14%
Women	102,721	103,207	90,743	95,575	102,393	90,805	-12%
12 to 19 years of age (both sexes)	23,945	17,275	12,343	12,311	21,743	15,071	-37%
20-34 years of age (both sexes)	72,736	64,853	63,262	77,517	75,939	59,967	-18%
35-44 years of age (both sexes)	54,386	49,621	42,510	38,466	44,687	43,438	-20%
45-64 years of age (both sexes)	59,527	61,207	60,064	70,668	73,521	66,234	11%
65 years and over (both sexes)	16,093	14,224	12,584	12,730	14,545	13,004	-19%

Statistics Canada: Canadian Community Health Survey, 2000-2009. E=Interpret with caution

Prevalence of smoking by health unit, Manitoba, daily or occasional smoking, 2009



Number of smokers by health unit, Manitoba, daily or occasional smoking, 2009



## PREVALENCE OF SMOKING (DAILY AND OCCASIONAL) IN MANITOBA: TRENDS 2000-2009

	2000	2003	2005	2007	2008	2009	% Change
<b>Percentage who smoke</b>							
<b>Canada</b>	<b>25.9</b>	<b>23</b>	<b>21.8</b>	<b>22</b>	<b>21.4</b>	<b>20.1</b>	<b>-22%</b>
	25.5-26.3	22.7-23.4	21.4-22.1	21.6-22.5	20.9-21.9	19.6-20.7	
<b>Manitoba</b>	<b>25</b>	<b>22.8</b>	<b>20.5</b>	<b>22.5</b>	<b>24.2</b>	<b>20.5</b>	<b>-18%</b>
	23.5-26.5	21.2-24.4	19-21.9	20.1-24.9	21.8-26.6	18.2-22.7	
<b>By Health Unit</b>							
• Assiniboine (Marq/S.Westman)	20	20.3	15.8	26.7	21.6	17.8	-11%
	15-25	16-24.7	12.3-19.2	21.1-32.2	16.4-26.9	12.6-23	
• Brandon	26	22.8	24.2	21.4	26	20.2	-22%
	22.9-29.1	18.1-27.6	20-28.4	16.4-26.3	20.6-31.4	12.6-27.7	
• Burntwood/Churchill	43.4	43.9	35.4	35.1	41.3	36.5	-16%
	35.5-51.2	36.6-51.2	30.2-40.5	25.9-44.3	31.3-51.2	22.2-50.8	
• Central	23	22.4	19.6	20.7	25	24.9	8%
	18.7-27.3	18.6-26.3	16.2-23	15.1-26.3	20.3-29.8	17.5-32.2	
• Interlake	28.6	23.2	18.9	17.4	24.9	22.6	-21%
	24.6-32.5	19.1-27.3	14.5-23.3	13.2-21.6	18.4-31.4	12-33.2	
• Nor man	26.1	29.1	28.9	32.4	32.9	32.1	23%
	21.4-30.8	24.3-33.9	21.4-36.4	25-39.8	25.2-40.6	21.4-42.8	
• North Eastman	24.2	20.6	20.2	24.1	26.7	19.3	-20%
	19.6-28.7	14.4-26.7	16.5-24	17.4-30.8	19.3-34.1	12.7-25.9	
• Parkland	24.7	23.1	24.8	16.3	27.2	27.5	11%
	20-29.3	18.3-27.8	19.5-30	11.5-21.1	20.2-34.3	16.8-38.2	
• South Eastman	21.8	23.1	19.3	22.7	22.3	21.6	-1%
	18.5-25.1	18.7-27.5	15.2-23.4	14.7-30.7	14.3-30.4	14-29.2	
• Winnipeg	25.1	22.4	20.2	22.7	23.3	18.8	-25%
	22.8-27.4	20-24.8	17.9-22.5	19-26.3	19.7-27	15.6-22	
<b>Men</b>	<b>27.7</b>	<b>23.2</b>	<b>21.8</b>	<b>25.1</b>	<b>27.3</b>	<b>22.4</b>	<b>-19%</b>
	25.6-29.9	21.1-25.3	19.7-23.9	21.3-28.8	23.7-30.9	19.1-25.8	
<b>Women</b>	<b>22.3</b>	<b>22.4</b>	<b>19.1</b>	<b>20</b>	<b>21.2</b>	<b>18.5</b>	<b>-17%</b>
	20.5-24.1	20.1-24.7	17.2-21.1	17.1-22.9	18.2-24.1	15.3-21.8	
12 to 19 years of age (both sexes)	19.7	14.1	10	10	17.5	E12.1	-39%
	16.2-23.2	11-17.1	7.2-12.7	7-13	11.3-23.6	7-17.1	
20-34 years of age (both sexes)	33	30	28.5	32.7	32	27.2	-18%
	30-36	26.2-33.8	25.1-31.8	26.3-39.1	27.4-36.6	21.7-32.8	
35-44 years of age (both sexes)	31.4	29.7	26.2	27.3	31.5	26.7	-15%
	27.9-34.8	25.2-34.2	22.5-30	21.7-32.9	24.8-38.1	18.6-34.8	
45-64 years of age (both sexes)	23.9	23.4	21.5	24.1	24.5	21.5	-10%
	21.3-26.6	20.5-26.3	18.5-24.4	20-28.2	20.6-28.3	17.3-25.7	
65 years and over (both sexes)	11.2	10.1	8.7	8.7	9.8	8.6	-23%
	8.5-13.8	7.6-12.5	6.9-10.5	6.6-10.9	6.7-12.8	5.5-11.7	
<b>Statistics Canada: Canadian Community Health Survey, 2009. E=Interpret with caution; F=failed</b>							

**NON-SMOKERS' DAILY EXPOSURE TO SECOND HAND SMOKE AT HOME IN MANITOBA, 2009**

	Percentage of population			Number of People
	Prevalence	95% confidence low		
		Low	high	
<b>Canada</b>	<b>6.2</b>	<b>5.9</b>	<b>6.6</b>	<b>1,417,072</b>
<b>Manitoba</b>	<b>6.1</b>	<b>4.6</b>	<b>7.5</b>	<b>46,652</b>
Men	7	4.6	9.4	25,813
Women	5.2	3.5	6.9	20,840
12 to 19 years of age (both sexes)	E18.5	11.7	25.2	E20,327
20-34 years of age (both sexes)	E4.5	1.8	7.1	E7,127
35-44 years of age (both sexes)	F			
45-64 years of age (both sexes)	E4	2.4	5.6	E9,638
65 years and over (both sexes)	E2,8	1,4	4,4	E3,982

*Statistics Canada: Canadian Community Health Survey, 2009. E=Interpret with caution; F=failed*

**NON-SMOKERS' DAILY EXPOSURE TO SECOND HAND SMOKE IN PUBLIC PLACES IN MANITOBA, 2009**

	Percentage of population			Number of People
	Prevalence	95% confidence low		
		Low	high	
<b>Canada</b>	<b>10</b>	<b>9.5</b>	<b>10.4</b>	<b>2,261,042</b>
<b>Manitoba</b>	<b>8.9</b>	<b>6.8</b>	<b>10.9</b>	<b>67,972</b>
Men	11.3	8	14.6	41,513
Women	E6.6	4.3	9	E26,459
12 to 19 years of age (both sexes)	E16.6	10.9	22.3	E18,226
20-34 years of age (both sexes)	E10.4	5.3	15.5	E 16,603
35-44 years of age (both sexes)	E7.9	3	12.8	E 9,335
45-64 years of age (both sexes)	E8.1	3.9	12.3	E 19,617
65 years and over (both sexes)	E3	1.2	4.9	E 4,191

*Statistics Canada: Canadian Community Health Survey, 2009. E=Interpret with caution; F=failed*

**NON-SMOKERS' DAILY EXPOSURE TO SECOND HAND SMOKE IN VEHICLES IN MANITOBA, 2009**

	Percentage of population			Number of People
	Prevalence	95% confidence low		
		Low	high	
<b>Canada</b>	<b>7.1</b>	<b>6.7</b>	<b>7.5</b>	<b>1,617,213</b>
<b>Manitoba</b>	<b>8.9</b>	<b>7</b>	<b>10.8</b>	<b>68,385</b>
Men	12.4	8.8	16	45,831
Women	5.7	3.9	7.4	22,555
12 to 19 years of age (both sexes)	E15.7	10.2	21.2	17,297
20-34 years of age (both sexes)	E 10.8	6.3	15.2	17,214
35-44 years of age (both sexes)	E 9.9	4.8	15	11,808
45-64 years of age (both sexes)	E 8.1	3.8	12.5	19,699
65 years and over (both sexes)	E 1.7	.6	2.8	2,367

*Statistics Canada: Canadian Community Health Survey, 2009. E=Interpret with caution; F=failed*

### NON-SMOKERS' EXPOSURE TO SECOND HAND SMOKE IN MANITOBA, 2003- 2009

	2003	2005	2007	2008	2009	
<b>Number of non-smokers (aged 12 plus)</b>						
Exposed to second hand smoke in the past month:						
• In public places	137,232	44,799	63,604	59,932	67,972	-50%
• At home	75,486	64,032	64,725	50,886	46,652	-38%
• In vehicles	75,285	64,027	52,483	61,723	68,385	-9%
<b>Percentage of non-smokers (aged 12 plus)</b>						
Exposed to second hand smoke in the past month:						
• In public places	19.6 17.8-21.3	6.1 4.9-7.2	8.7 6.7-10.7	8.3 6.5-10.1	8.9 6.8-10.9	-55%
• At home	10.7 9.4-12.1	8.6 7.4-9.8	8.9 6.8-10.9	7 5.4-8.7	6.1 4.6-7.5	-43%
• In vehicles	10.7 9.4-12.1	8.6 7.5-9.8	7.2 5.5-8.9	8.5 6.7-10.4	8.9 7-10.8	-17%
<i>Statistics Canada: Canadian Community Health Survey, 2009. E=Interpret with caution</i>						

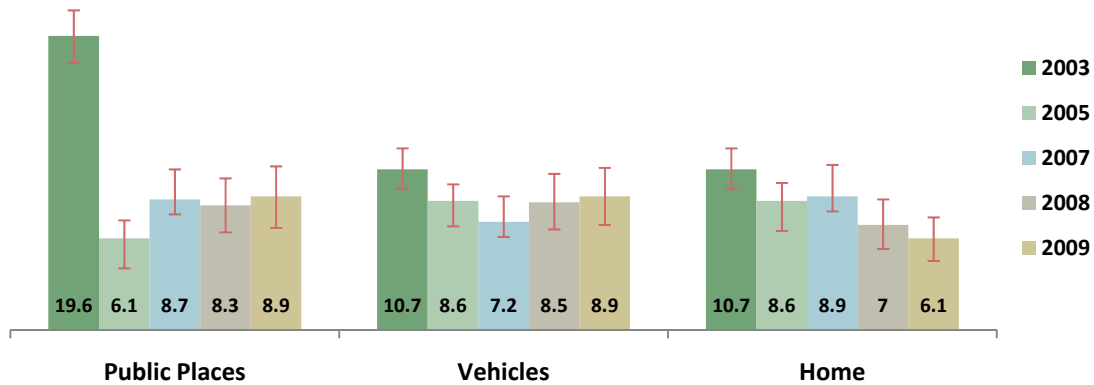
### YOUNG NON-SMOKERS' EXPOSURE TO SECOND HAND SMOKE IN MANITOBA, 2003- 2009

	2003	2005	2007	2008	2009	
<b>Number of non-smokers (aged 12 to 19)</b>						
Exposed to second hand smoke in the past month:						
• In public places	26,407	E10,393	E20,329	12,711	E18,226	E-31%
• At home	24,186	22,336	E18,369	19,860	E20,327	E-16%
• In vehicles	23,034	19,953	16,120	18,781	E17,297	E-25%
<b>Percentage of non-smokers (aged 12 plus)</b>						
Exposed to second hand smoke in the past month:						
• In public places	25.1 20.8-29.3	E9.4 6.2-12.6	E18.3 11.9-24.7	12.4 8.6-16.1	E16.6 10.9-22.3	E-34%
• At home	22.9 19-26.7	20 15.7-24.3	E16.5 10.6-22.5	19.3 13.7-24.9	E18.5 11.7-25.2	E-19%
• In vehicles	21.8 17.9-25.7	17.9 14-21.8	14.5 9.8-19.2	18.3 13-23.5	E15.7 10.2-21.2	E-28%
<i>Statistics Canada: Canadian Community Health Survey, 2009. E=Interpret with caution</i>						

### PEOPLE LIVING IN HOMES WHERE SMOKERS ARE ASKED TO REFRAIN FROM SMOKING IN THE HOUSE, 2003-2009

	2003	2005	2007	2008	2009	
<b>Number of people</b>						
All ages	528,245	626,016	667,357	680,393	680,393	29%
12 to 19 years of age	72,611	85,667	89,094	78,820	78,820	9%
<b>Percentage of non-smokers (aged 12 plus)</b>						
All ages	58.3 56.3-60.4	67.5 65.8-69.2	71.1 68.7-73.5	71.9 69.7-74	71.9 69.7-74	23%
12 to 19 years of age	59.3 54.7-63.8	70 65.8-74.1	72.4 65.7-79.1	63.5 57.6-69.5	63.5 57.6-69.5	7%
<i>Statistics Canada: Canadian Community Health Survey, 2009. E=Interpret with caution</i>						

## NON-SMOKERS' EXPOSURE TO SECOND HAND SMOKE PERCENTAGE OF POPULATION REPORTING EXPOSURE MANITOBA, 2003- 2009



The data on this fact sheet were derived from the Canadian Community Health Surveys (Cycle 2.1, 2.2 and 2007, 2008 and 2009) as provided by Statistics Canada. Further information on survey methodology can be found at: <http://www.statcan.gc.ca/dli-ild/data-donnees/ftp/cchs-escc-eng.htm>

### The questions used on the CCHS survey included:

- “At the present time, do you smoke cigarettes daily, occasionally or not at all?” This question was asked of all respondents.
- “Including both household members and regular visitors, does anyone smoke inside your home every day or almost every day?” This question was asked of non-smokers.
- (In the past month,) were you exposed to second-hand smoke, every day or almost every day, in public places (such as bars, restaurants, shopping malls, arenas, bingo halls, bowling alleys)? This question was asked of non-smokers.
- In the past month, were you exposed to second-hand smoke, every day or almost every day, in a car or other private vehicle? This question was asked of non-smokers.