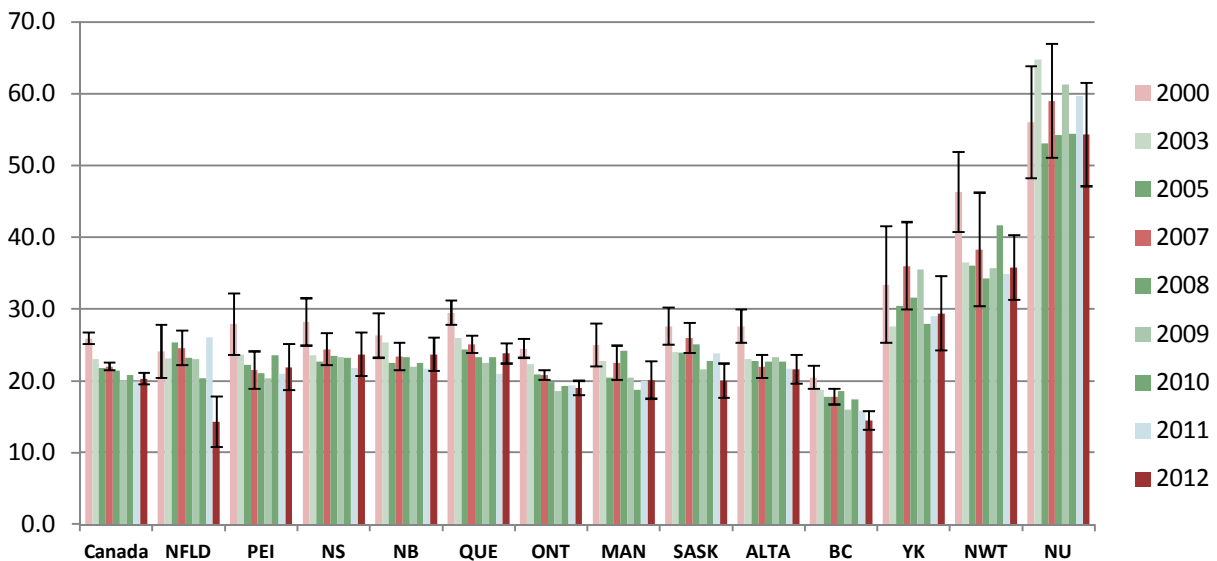


Smoking in Canadian Provinces, 2000-2012

Key Finding

- The Canadian Community Health Survey (CCHS) first gathered data on smoking between the autumns of 2000 and 2001. It now collects and releases data on an annual basis.
- According to data collected during by the CCHS, the rate of smoking (i.e. the number of Canadians who smoke on an occasional basis or who smoke each day) has fallen in all Canadian jurisdictions. In most jurisdictions the reduction was statistically significant.
- The overall decline in prevalence from 2000/1 to 2012 was 5.6 percentage points (from 25.9% in 2000/1 to 20.19%), which is to say that the smoking rate fell by about almost one-quarter during this period.
- In the last 5 years, the rate of progress has slowed. The overall decline in prevalence between 2007 and 2012 was 1.7 percentage points (from 22% to 20.3%), which is to say that the rate of smoking fell by about one-twelfth during this 5 year period.
- Because there was population growth during this period, the number of smokers fell at a somewhat smaller rate. There were about 745,000 fewer Canadian smokers in 2012 than when the CCHS first collected data. The number of smokers has fallen by about 180,000 in the past 5 years.
- Almost two-thirds of Canada's smokers live in Ontario and Quebec (63%). While the northern territories have the highest smoking rates, only 0.5% of Canadian smokers live in the northern region.

CURRENT SMOKING, DAILY AND OCCASIONAL, CANADIANS AGED 12 AND OVER – 2000/1 TO 2012, CCHS



Current Smoking, daily and occasional, 2000-2012

Number of smokers

	2000/1	2003	2005	2007	2008	2009	2010	2011	2012
Canada	6,677,856	6,080,504	5,874,689	6,112,442	6,009,311	5,730,321	5,967,259	5,764,843	5,933,095
Newf. & Lab	133,698	110,558	103,663	111,851	108,884	103,409	101,795	90,734	115,412
Prince Edward Island	32,410	28,196	26,031	25,555	25,235	24,694	28,684	26,116	27,401
Nova Scotia	222,300	187,392	180,176	194,307	188,488	186,514	186,984	176,224	190,986
New Brunswick	167,004	161,474	143,543	149,124	149,932	142,147	143,210	139,523	152,124
Quebec	1,835,890	1,646,853	1,577,008	1,650,863	1,542,295	1,499,501	1,570,677	1,428,422	1,626,375
Ontario	2,417,474	2,271,303	2,186,991	2,242,443	2,172,468	2,055,964	2,161,455	2,191,502	2,161,957
Manitoba	226,687	207,180	190,762	211,692	230,436	197,714	183,772	198,837	201,163
Saskatchewan	222,536	190,529	187,522	204,209	201,824	175,651	188,275	198,230	168,557
Alberta	683,918	595,072	610,996	628,853	660,351	695,369	698,429	675,966	689,302
British Columbia	701,636	658,728	639,351	662,026	700,691	617,778	671,774	617,970	568,961
Yukon	8,336	6,868	8,257	9,655	8,594	9,870	8,191	8,722	8,882
Northwest Territories	15,050	12,068	12,495	12,858	11,728	12,271	14,703	12,232	12,498
Nunavut	10,916	8,904	7,896	9,006	8,384	9,437	9,310	10,275	9,477

Current Smoking, daily and occasional, 2000-2012

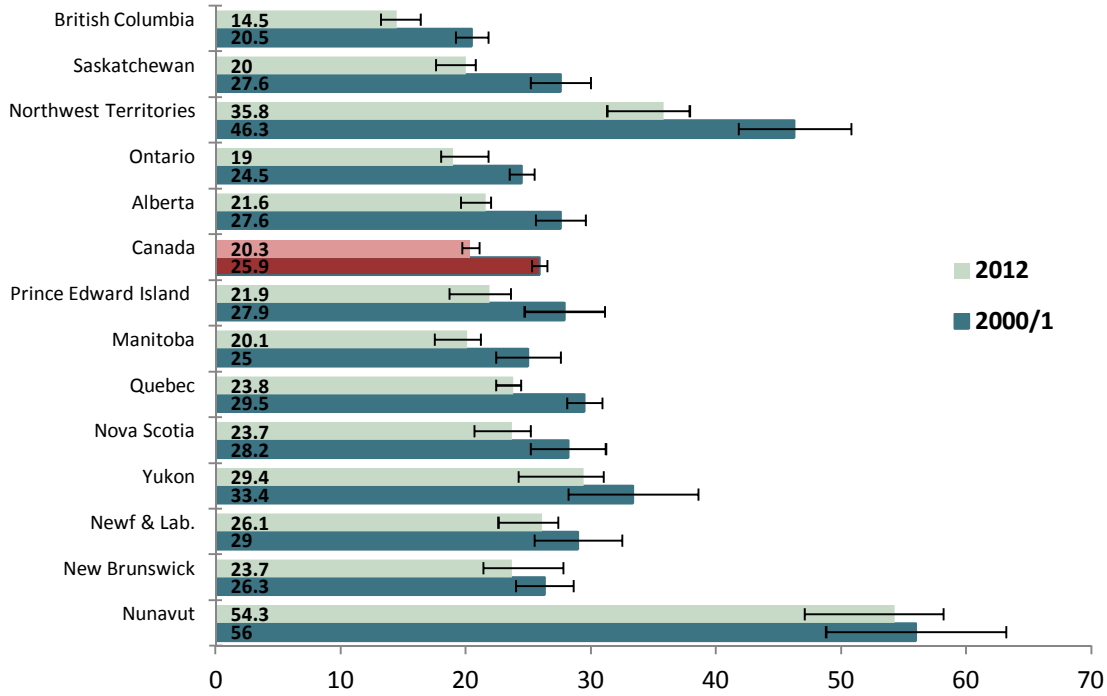
Percentage of population who smoke

	2000/1	2003	2005	2007	2008	2009	2010	2011	2012
Canada	25.9	23	21.8	22	21.4	20.1	20.8	19.9	20.3
	25.5-26.3	22.7-23.4	21.4-22.1	21.6-22.5	20.9-21.9	19.6-20.7	20.2-21.3	19.3-20.4	19.6-20.9
Newf & Lab.	29	24.1	23.1	25.4	24.6	23.2	23.0	20.4	26.1
	27.1-30.8	22.1-26.2	21.3-24.9	22.9-27.8	22.2-27	20.7-25.7	20.4-25.5	18.1-22.7	22.5-29.6
Prince Edward Island	27.9	23.7	22.2	21.5	21.1	20.4	23.6	21	21.9
	25.7-30	21.2-26.1	19.7-24.6	19-24.1	17.9-24.3	16.8-24	19.8-27.3	17.2-24.9	18.7-25.1
Nova Scotia	28.2	23.6	22.7	24.4	23.5	23.3	23.2	21.8	23.7
	26.6-29.9	21.9-25.2	21-24.3	22.1-26.6	21.2-25.9	20.8-25.7	20.6-25.8	19.3-24.3	20.6-26.7
New Brunswick	26.3	25.4	22.5	23.4	23.3	22	22.5	21.7	23.7
	24.8-27.9	23.7-27.1	21.1-24	21.4-25.3	21.2-25.5	19.6-24.4	20.4-24.6	19.2-24.3	21.3-26
Quebec	29.5	26	24.4	25.1	23.3	22.5	23.3	21	23.8
	28.6-30.3	25.1-26.8	23.7-25.1	23.9-26.3	22.1-24.5	21.3-23.7	22.1-24.6	19.8-22.3	22.4-25.2
Ontario	24.5	22.3	20.9	20.8	19.8	18.6	19.3	19.4	19
	23.8-25.1	21.6-22.9	20.3-21.5	20-21.5	18.9-20.8	17.7-19.4	18.4-20.3	18.4-20.3	17.9-20
Manitoba	25	22.8	20.5	22.5	24.2	20.5	18.8	20	20.1
	23.5-26.5	21.2-24.4	19-21.9	20.1-24.9	21.8-26.6	18.2-22.7	16.5-21.0	16.7-23.3	17.4-22.7
Saskatchewan	27.6	24	23.9	26	25.1	21.6	22.8	23.8	20
	26.3-28.9	22.5-25.4	22.6-25.3	23.9-28.1	23.2-27.1	19.6-23.6	20.1-25.5	21.5-26.1	17.5-22.4
Alberta	27.6	23	22.8	22	22.7	23.3	22.7	21.7	21.6
	26.4-28.7	21.9-24.2	21.7-23.9	20.4-23.6	21-24.4	21.2-25.4	20.9-24.4	19.8-23.6	19.6-23.6
British Columbia	20.5	18.8	17.8	17.8	18.6	16	17.4	15.8	14.5
	19.7-21.3	17.9-19.6	17-18.6	16.8-18.9	17.3-19.9	14.7-17.4	16.0-18.8	14.4-17.2	13.1-15.8
Yukon	33.4	27.6	30.4	36	31.6	35.5	27.9	29	29.4
	29.4-37.5	23.6-31.6	25.9-34.9	29.8-42.1	25.7-37.6	31.2-39.8	23.8-31.9	25.5-33.1	24.2-34.6
Northwest Territories	46.3	36.5	36.1	38.3	34.3	35.7	41.7	34.9	35.8
	43.5-49.1	30.9-42	32.2-40	30.4-46.2	29.8-38.9	31.2-40.3	36.0-47.4	30.9-38.9	31.2-40.3
Nunavut	56	64.8	53.1	59	54.2	61.3	54.4	59.7	54.3
	52.1-59.9	59.6-70.1	48.7-57.5	51.2-66.9	48.3-60.2	55.4-67.1	48.0-60.8	52-67.4	47.1-61.5

Sources:

Canadian Community Health Survey, Statistics Canada. Cycle 1.1, 2.1, 3.1, 2007, 2008, 2009, 2010, 2011

Prevalence of Current Smoking, 2000/1 and 2012: ages 12+, ranked in order of reduction in relative smoking prevalence



Distribution of Canadian daily and occasional smokers by province, 2011

