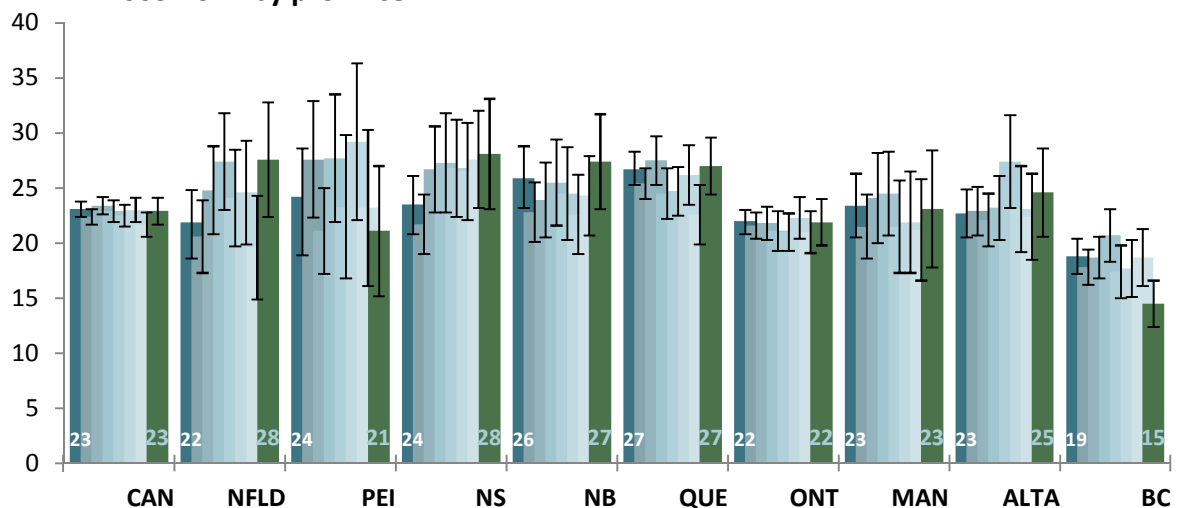


# Smoking among middle-aged Canadians, 2003-2012

## Key Finding

- According to data collected during the Canadian Community Health Surveys taken in 2003 and 2012, the rate of smoking fell in all Canadian jurisdictions, but not for middle-aged Canadians.
- The overall decline in current smoking prevalence (those who smoke on a daily or occasional basis) was 2.7% (from 23% to 20.3%), and was about the same for daily smoking (a 2.4 percentage point decline from 17.9% to 15.5%).
- Because of a population growth during this period, the number of smokers fell at a somewhat smaller rate. There were about 152,000 fewer smokers (and almost 200,000 fewer daily smokers) in 2012 than in 2003.
- Among middle-aged Canadians (those between 45 and 64 years of age), there was virtually no change in smoking rates, and the number of smokers in this age group increased by over 400,000 Canadians.
- Only one province (British Columbia) saw a statistically significant drop in the number of middle aged smokers or the prevalence of smoking in this age group during this period. This reduction occurred in 2012.

**Prevalence of current smoking among middle-aged Canadians aged 45-64  
2003-2012 by province**



## Current smoking among those 45-64 years old, 2003-2012

## Prevalence/Percentage

|                                    | 2003 | 2005 | 2007 | 2008              | 2009              | 2010              | 2011 | 2012              |
|------------------------------------|------|------|------|-------------------|-------------------|-------------------|------|-------------------|
| <b>Canada</b>                      | 23.1 | 22.4 | 23.4 | 22.9              | 22.5              | 23                | 21.7 | 22.9              |
| <i>Low CI 95%</i>                  | 22.4 | 21.7 | 22.5 | 21.9              | 21.5              | 22                | 20.6 | 21.8              |
| <i>High CI 95%</i>                 | 23.8 | 23.1 | 24.2 | 23.9              | 23.5              | 24.1              | 22.7 | 24.1              |
| <b>Newfoundland &amp; Labrador</b> | 21.9 | 20.6 | 24.8 | 27.4              | 24.1              | 24.6              | 19.6 | 27.6              |
| <i>Low CI 95%</i>                  | 19   | 17.3 | 20.8 | 22.9              | 19.6              | 19.9              | 15.4 | 22.4              |
| <i>High CI 95%</i>                 | 24.8 | 23.9 | 28.8 | 31.8              | 28.5              | 29.3              | 23.8 | 32.8              |
| <b>Prince Edward Island</b>        | 24.2 | 27.6 | 21.1 | 27.7              | 23.3              | 29.2              | 23.2 | 21.1              |
| <i>Low CI 95%</i>                  | 19.9 | 22.3 | 17.1 | 21.8              | 16.9              | 22                | 16   | 15.2              |
| <i>High CI 95%</i>                 | 28.6 | 32.9 | 25   | 33.5              | 29.8              | 36.3              | 30.4 | 27                |
| <b>Nova Scotia</b>                 | 23.5 | 21.7 | 26.7 | 27.3              | 26.8              | 26.5              | 27.6 | 28.1              |
| <i>Low CI 95%</i>                  | 20.9 | 19   | 22.8 | 22.8              | 22.5              | 22                | 22.7 | 23.1              |
| <i>High CI 95%</i>                 | 26.1 | 24.4 | 30.6 | 31.8              | 31.2              | 30.9              | 32.6 | 33.1              |
| <b>New Brunswick</b>               | 25.9 | 22.8 | 23.9 | 25.5              | 24.5              | 22.6              | 24.3 | 27.4              |
| <i>Low CI 95%</i>                  | 23   | 20.1 | 20.6 | 21.5              | 20.4              | 19.1              | 19.8 | 23                |
| <i>High CI 95%</i>                 | 28.8 | 25.5 | 27.3 | 29.4              | 28.7              | 26.2              | 28.8 | 31.7              |
| <b>Quebec</b>                      | 26.7 | 25.4 | 27.5 | 24.5              | 24.7              | 26.2              | 22.6 | 27                |
| <i>Low CI 95%</i>                  | 25   | 23.9 | 25.2 | 22.2              | 22.5              | 23.6              | 20.4 | 24.3              |
| <i>High CI 95%</i>                 | 28.3 | 26.8 | 29.7 | 26.8              | 26.9              | 28.9              | 24.7 | 29.6              |
| <b>Ontario</b>                     | 22   | 21.6 | 21.8 | 21.1              | 21                | 22.3              | 21   | 21.9              |
| <i>Low CI 95%</i>                  | 20.9 | 20.4 | 20.4 | 19.4              | 19.4              | 20.5              | 19.2 | 19.8              |
| <i>High CI 95%</i>                 | 23   | 22.8 | 23.3 | 22.9              | 22.7              | 24.2              | 22.8 | 24                |
| <b>Manitoba</b>                    | 23.4 | 21.5 | 24.1 | 24.5              | 21.5              | 21.9              | 21.2 | 23.1              |
| <i>Low CI 95%</i>                  | 20.5 | 18.5 | 20   | 20.6              | 17.3              | 17.4              | 15.8 | 17.7              |
| <i>High CI 95%</i>                 | 26.3 | 24.4 | 28.2 | 28.3              | 25.7              | 26.5              | 26.6 | 28.4              |
| <b>Saskatchewan</b>                | 23.2 | 27.1 | 28.5 | 28.4              | 24.4              | 25.4              | 27.6 | 24.2              |
| <i>Low CI 95%</i>                  | 20.7 | 24.3 | 24.9 | 24.5              | 20.5              | 21.1              | 23.4 | 19.6              |
| <i>High CI 95%</i>                 | 25.6 | 29.8 | 32.2 | 32.3              | 28.4              | 29.7              | 31.9 | 28.8              |
| <b>Alberta</b>                     | 22.7 | 22.9 | 22.1 | 23.2              | 27.4              | 23.1              | 22.4 | 24.6              |
| <i>Low CI 95%</i>                  | 20.5 | 20.6 | 19.7 | 20.4              | 23.2              | 19.1              | 19   | 20.7              |
| <i>High CI 95%</i>                 | 24.9 | 25.1 | 24.5 | 26.1              | 31.6              | 27                | 25.8 | 28.6              |
| <b>British Columbia</b>            | 18.8 | 17.8 | 18.7 | 20.7              | 17.4              | 17.7              | 18.7 | 14.5              |
| <i>Low CI 95%</i>                  | 17.2 | 16.3 | 16.9 | 18.3              | 14.9              | 15.2              | 16   | 12.4              |
| <i>High CI 95%</i>                 | 20.4 | 19.4 | 20.6 | 23.1              | 19.8              | 20.3              | 21.4 | 16.6              |
| <b>Yukon</b>                       | 26   | 35   | 37.4 | 36.5              | 36.4              | 30.8              | 34.7 | 25.8 <sup>E</sup> |
| <i>Low CI 95%</i>                  | 20.3 | 28.4 | 27.3 | 26.8              | 27.8              | 24.2              | 26.3 | 17.2 <sup>E</sup> |
| <i>High CI 95%</i>                 | 31.8 | 41.6 | 47.5 | 46.1              | 45                | 37.4              | 43.1 | 34.5 <sup>E</sup> |
| <b>Northwest Territories</b>       | 36.3 | 31.8 | 33.5 | 40.9              | 31.5 <sup>E</sup> | 53.1              | 31.2 | 45.9              |
| <i>Low CI 95%</i>                  | 28.7 | 23.5 | 23.8 | 31.1              | 20.2 <sup>E</sup> | 42.1              | 23.8 | 36                |
| <i>High CI 95%</i>                 | 44   | 40.1 | 43.2 | 50.8              | 42.9 <sup>E</sup> | 64                | 38.6 | 55.8              |
| <b>Nunavut</b>                     | 53.2 | 45.6 | 46.5 | 29.8 <sup>E</sup> | 44.4 <sup>E</sup> | 33.6 <sup>E</sup> | 45.7 | 52.3              |
| <i>Low CI 95%</i>                  | 47.5 | 31.7 | 32   | 11.3 <sup>E</sup> | 26.0 <sup>E</sup> | 17.4 <sup>E</sup> | 32.5 | 38.1              |
| <i>High CI 95%</i>                 | 58.9 | 59.6 | 61   | 48.2 <sup>E</sup> | 62.8 <sup>E</sup> | 49.8 <sup>E</sup> | 58.9 | 66.5              |

## Sources:

Canadian Community Health Survey, Statistics Canada. Cycle 1.1, 2.1, 3.1, 2007, 2008, 2009, 2010, 2011, 2012. CANSIM 105-0501

## Current smoking among those 45-64 years old, 2003-2012

Number of smokers

|                         | 2003      | 2005      | 2007      | 2008             | 2009               | 2010               | 2011      | 2012               |
|-------------------------|-----------|-----------|-----------|------------------|--------------------|--------------------|-----------|--------------------|
| <b>Canada</b>           | 1,802,718 | 1,858,517 | 2,057,218 | 2,067,504        | 2,085,831          | 2,184,460          | 2,080,926 | 2,211,004          |
| Newfoundland & Labrador | 32,016    | 31,053    | 38,705    | 43,512           | 38,852             | 39,951             | 31,996    | 45,136             |
| Prince Edward Island    | 8,632     | 10,318    | 8,269     | 11,188           | 9,707              | 12,434             | 10,077    | 9,283              |
| Nova Scotia             | 57,851    | 55,795    | 72,035    | 74,982           | 75,234             | 75,335             | 79,120    | 80,182             |
| New Brunswick           | 51,441    | 47,457    | 51,899    | 56,587           | 55,494             | 50,879             | 55,780    | 62,365             |
| Quebec                  | 530,510   | 531,851   | 600,824   | 545,384          | 556,719            | 601,841            | 520,796   | 621,829            |
| Ontario                 | 640,807   | 671,998   | 723,702   | 724,644          | 743,292            | 809,926            | 771,984   | 812,487            |
| Manitoba                | 61,207    | 60,064    | 70,668    | 73,521           | 66,234             | 69,055             | 67,908    | 73,986             |
| Saskatchewan            | 51,694    | 63,001    | 69,356    | 71,442           | 62,993             | 67,249             | 73,744    | 64,917             |
| Alberta                 | 163,166   | 178,980   | 188,630   | 203,548          | 247,978            | 219,468            | 216,582   | 242,840            |
| British Columbia        | 199,079   | 200,554   | 225,088   | 254,310          | 221,192            | 227,798            | 243,936   | 188,074            |
| Yukon                   | 2,092     | 3,227     | 3,610     | 3,610            | 3,715              | 3,400              | 3,839     | 2,866 <sup>E</sup> |
| Northwest Territories   | 2,855     | 2,879     | 2,998     | 3,856            | 3,027 <sup>E</sup> | 5,664              | 3,330     | 4,909              |
| Nunavut                 | 1,368     | 1,337     | 1,432     | 920 <sup>E</sup> | 1,394 <sup>E</sup> | 1,459 <sup>E</sup> | 1,835     | 2,129              |

